

 *Zulfat*<sup>®</sup>  
Designer Suits

# RIYANA





 **Zulfat**<sup>®</sup>  
Designer Suits

# RIYANA

"What you wear is how you present yourself to the world, especially today, when human contacts are so quick. Fashion is instant language."





"Don't be into trends. Don't make fashion own you, but you decide what you are, what you want to express by the way you dress and the way to live."



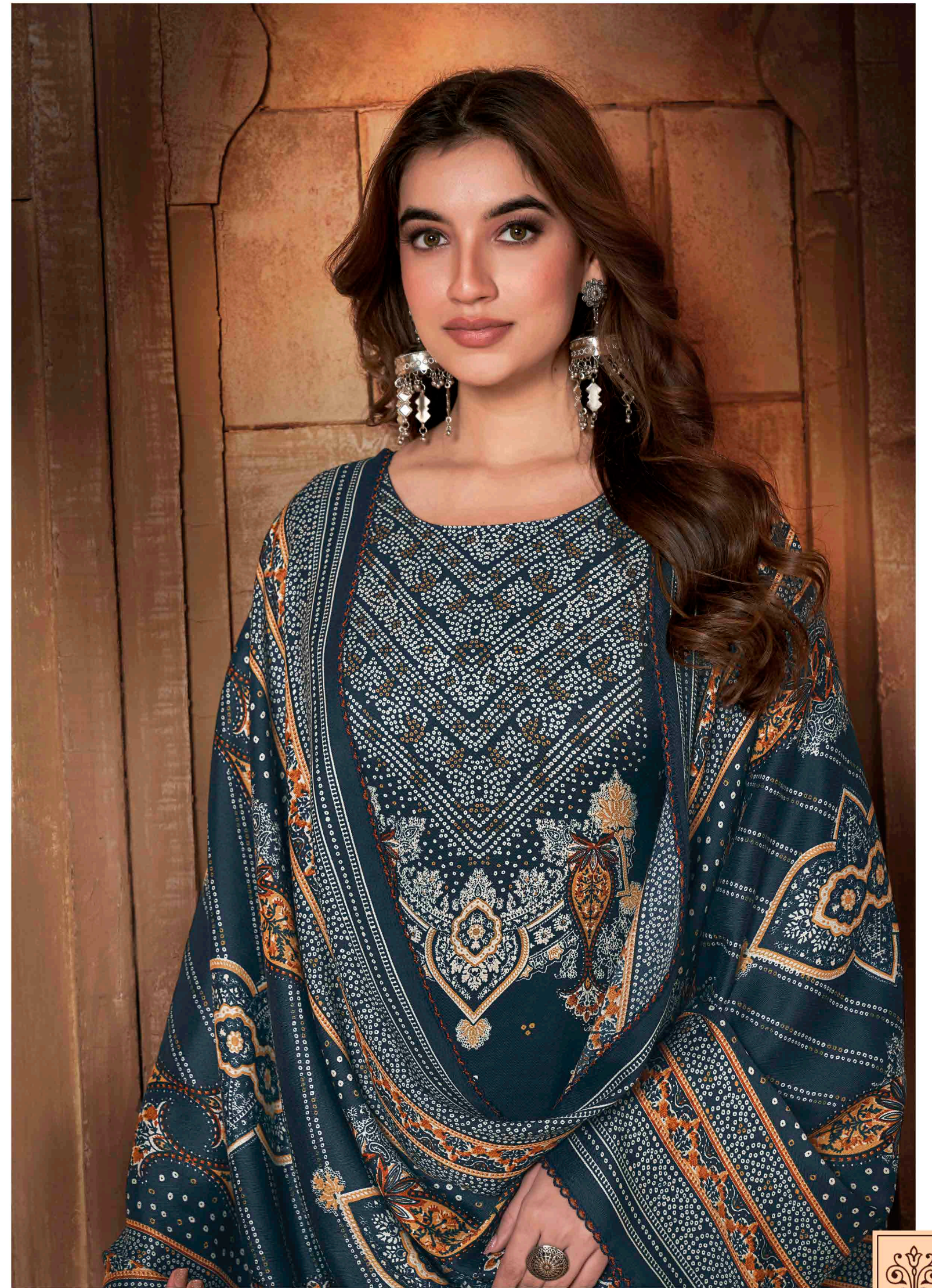
— ❧ NEW ARRIVALS ❧ —

"Fashion is part of the daily air and it changes all the time, with all the events. You can even see the approaching of a revolution in clothes. You can see and feel everything in clothes."



  
520 - 002



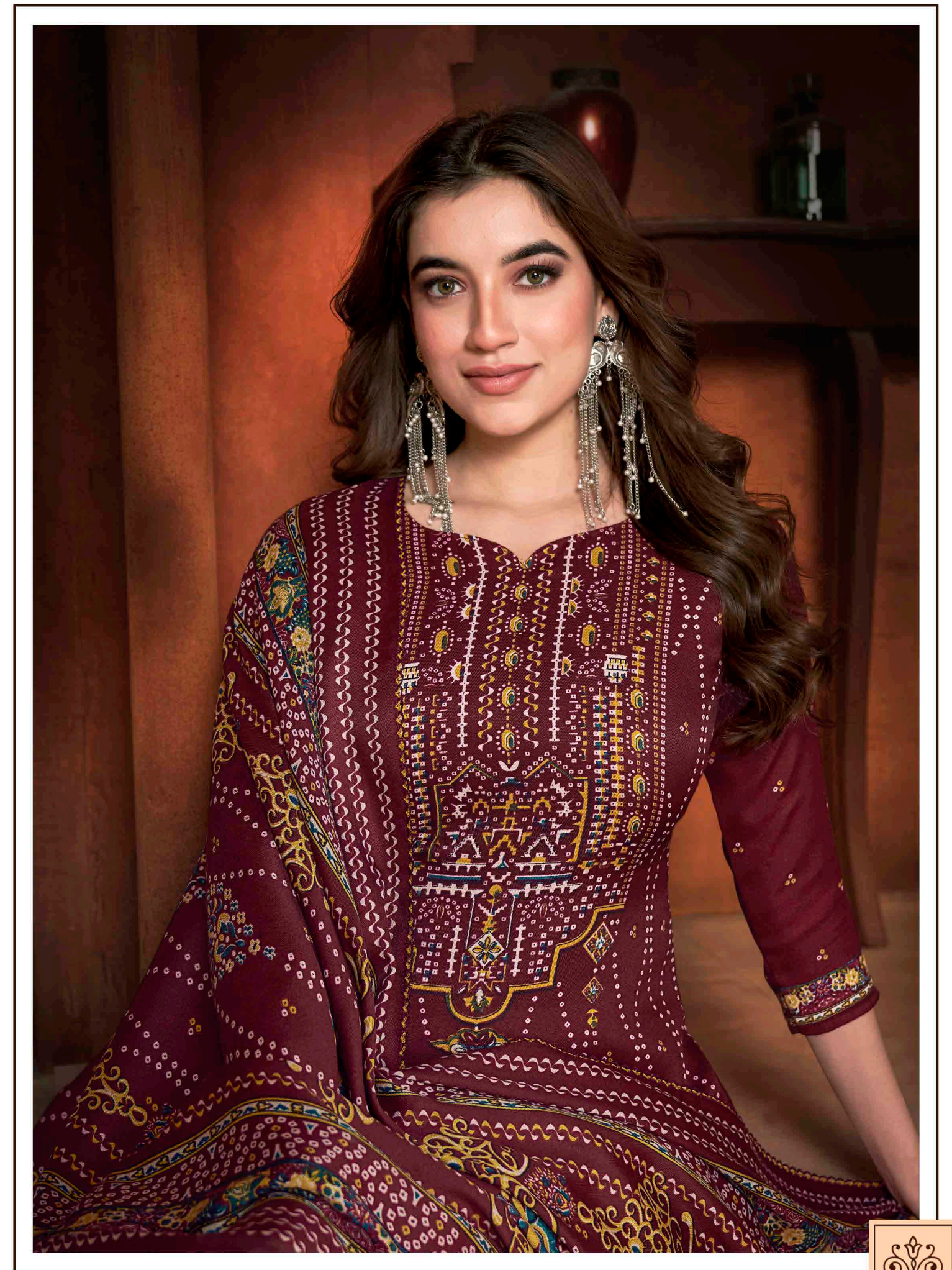




—> MOOD OF WARMTH <—

"Being well dressed hasn't much to do with having good clothes.  
It's a question of good balance and good common sense."





"Don't be into trends. Don't make fashion own you, but you decide what you are, what you want to express by the way you dress and the way to live."







FASHION ISSUE





—> MOOD OF WARMTH <—

"Being well dressed hasn't much to do with having good clothes.  
It's a question of good balance and good common sense."



 **Zulfat**<sup>®</sup>  
Designer Suits





520 - 001



520 - 002



520 - 003



520 - 004



520 - 005



520 - 006



520 - 007



520 - 008

TOP

100% PURE PREMIUM WOOLLEN PASHMINA. (2.50 MTR APX)

DUPATTA

100% PURE PREMIUM WOOLLEN PASHMINA SHAWL. (2.30 MTR APX)

BOTTOM

100% PURE PASHMINA SPUN. (3 MTR APX)



[WWW.ZULFAT.IN](http://WWW.ZULFAT.IN)

FOLLOW US ON



THIS BOOK / CATALOGUE / LOGO / ARE PROTECTED UNDER COPYRIGHT ACT.  
AN ILLEGAL / UNAUTHORIZED REPRINT, PUBLISHING, REPRODUCTION, DISTRIBUTION AND MODIFICATION OF ANY IMAGES, PHOTOGRAPHS AND PRODUCTS,  
TOTALLY OR IN PART, FOR ANY PURPOSE, REASON OR CAUSE IS STRICTLY PROHIBITED AND PUNISHABLE UNDER LAW.